

Programme:

1. *Array status – H. Munk*
2. *Observatory update – R. Pizzo*
3. *LTA update – A. Renting*
4. *COBALT status update – R. Nijboer*
5. *Imaging pipeline: the Selfcal tool – N. Vilchez*
6. *Gravitational lenses at low frequencies – N. Jackson*

News regarding the observing system

Station calibration



- Station calibration:
 - No further news
 - Core stations: calruns planned for the Christmas period
 - Tests of the automatic station calibration procedure ongoing
- Updated status available at

<http://www.astron.nl/radio-observatory/astronomers/current-status>

News regarding the observing system: Stability & performance

- Observations unstable during the last two weeks
- In particular, during the last two week-ends we suffered from BG/P failures:
 - On Saturday 30 November, the BG/P nis-server got stuck. /bghome0 was full. Operations resumed at 11:30 UT on the same day thanks to a manual action
 - On Friday 7 December, /bghome0(on bgfen0) became full and no observations could take place till a manual action on the next day solved the issue (data deletion)
 - New location for the BG/P parsets has been made available on Monday 9 December. Disk space will be enough for the remainder of the BG/P lifetime
 - Frequent failures of observations involving all International Stations

News regarding the observing system: Stability & performance

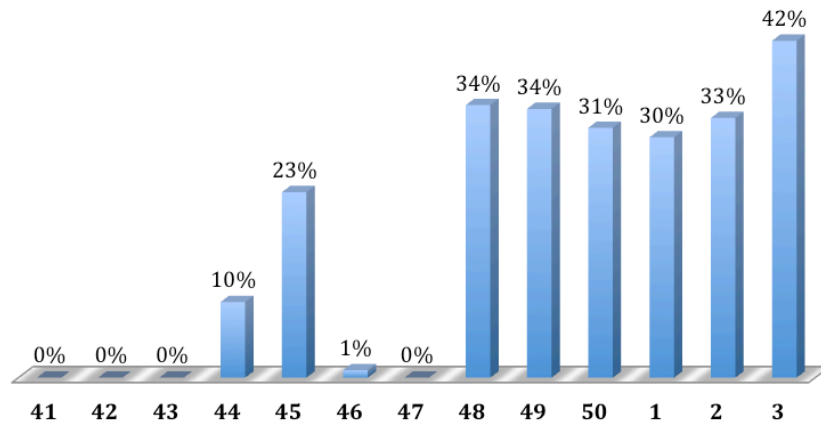
- Pipelines (calibrator, target, pre-processing) are stable, in general. But some of them take much longer than expected. Not yet clear if this is due to particular conditions on some nodes
- Swapping on some nodes from too many processes

News regarding the observing system : Archive

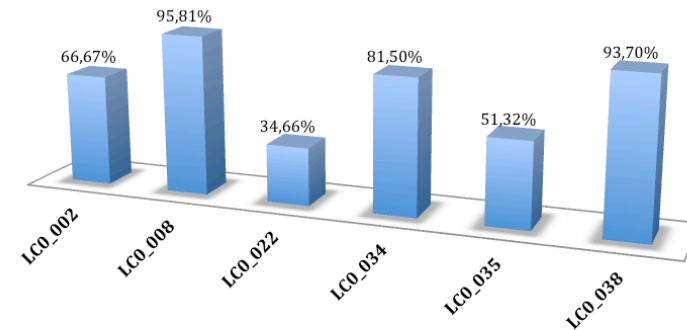
- Several delays in the ingestion of raw data and pipeline data products because of instability of the LTA and maintenance activities
- Data removal from CEP2 was slow
- Target cluster still down – decision was taken to start moving EoR data from CEP2 directly to the EoR cluster, bypassing TARGET. This will allow the continuation of the EoR observing programme
- Pulsars data being transferred to the LTA through a manual script
- More in Adriaan's talk

News regarding Cycle observations: Efficiency and projects status

Efficiency during the trimester Sep-Nov 2013



Status of active Cycle 0 projects



- Low efficiencies in the first part of the trimester caused by network reconfiguration
- So far, 32 Cycle 0 projects have been completed. The remaining ones will be scheduled with second priority during Cycle 1. 3 Cycle 1 projects have been completed

96% of Cycle 0 and 10% of Cycle 1 have been completed

News regarding Cycle 1 observations

TARGET MINTENANCE: LTA catalogue offline -> No ingest service and no LTA webinterface; TARGET database cluster offline on Tuesday 10 December																											
Week 50		day	0	1	2	3	4	5	6	7	8	9	10	11	12	13	14	15	16	17	18	19	20	21	22	23	
Approximate LST			6	7	8	9	10	11	12	13	14	15	16	17	18	19	20	21	22	23	0	1	2	3	4	5	
December	9	Mon	LC1_043 - NGC3432 - 8hrs							Migration MySQLserver from dop174 to dop293; COBALT testing; DE601, DE602, DE603, DE605, FR606, SE607, UK608 to local mode at 9 UTC							Stress system runs and TBB runs			LC1_032 - LSTs 02-03 2x1hr							
	10	Tue	LC1_032 - LSTs 06,08 - 2x1hr		Stress system runs and TBB runs					COBALT testing; DE601, DE602, DE603, DE605, FR606, SE607, UK608 to local mode at 9 UTC			LC1_023 - LSTs 16,18	COBALT testing			LC1_023 - LSTs 22	Stress system runs and TBB runs		LC1_023 - LSTs 02,07	LC0_002 - Jupiter - 21:55-22:45		LC1_039 (EoR) - 3C196				
	11	Wed	LC1_039 (EoR) - 3C196					Stress system runs and TBB runs		COBALT testing; DE601, DE602, DE603, DE605, FR606, SE607, UK608 to local mode at 9 UTC				LC1_023 - SS433 - 2x0.5hrs	COBALT testing	LC1_039 (EoR) - NCP											
	12	Thu	LC1_039 (EoR) - NCP						Stress system runs	COBALT testing					LC1_036 - 105+00 - 4hrs			Stress system runs and TBB runs		LC1_036 - 165+00 - 4hrs							
	13	Fri	LC1_036 - 165+00 - 4hrs	Stress system runs and TBB runs	DDT1_002 - 5hrs					COBALT testing; DE601, DE602, DE603, DE605, FR606, SE607, UK608 to local mode at 9 UTC							Stress system runs and TBB runs			LC1_055 - Orion - 6hrs							
	14	Sat	LC1_055 - Orion - 6hrs		Stress system runs and TBB runs																		LC1_055 - Orion - 6hrs				
	15	Sun	LC1_055 - Orion - 6hrs		LC1_033 - PanSTARRs - 2hrs		Stress system runs and TBB runs		LC1_052 - LOTAAS - 8hrs							MSSS - 8rs							LC1_039 (EoR) - 3C196				

- Detailed Cycle 1 schedule available here:

<https://docs.google.com/spreadsheet/cc?>

[key=0AtnmDczhIbEtdGQ4enZicHpGREpGYm1Pc2JrQWIZWmc&usp=sharing#gid=0](https://docs.google.com/spreadsheet/cc?key=0AtnmDczhIbEtdGQ4enZicHpGREpGYm1Pc2JrQWIZWmc&usp=sharing#gid=0)

- Contact Science Support in case of questions/issues
- **Always cc 'sciencesupport@astron.nl' and include the proposal code in the subject line****

CEP news:

- CEP-2: fairly stable
 - locus051 crashed due to a memory error
 - locus055 had a disk crash - rebuilding

- CEP-1:
 - Ice nodes becoming progressively unstable – **back-up your data elsewhere!**
 - Staging areas cleared up every week by removing pipeline data older than 4 weeks
 - **Ultimatum sent to heavy CEP1 users on Monday** – you old data will be deleted on Monday 16 December (3 pm) if you do not react to our e-mail

CALENDAR LOFAR activities



<http://www.astron.nl/radio-observatory/astronomers/commissioning/commisioning-plan>

- Next LSM : 8 January 2014
- Next Stop Day : 7 January 2014
- Third LOFAR Science collaboration : 8-11 April 2014
Workshop + MSSS workshop